

Your new-look Shoalhaven Hospital



Welcome to our first community newsletter updating progress on the \$438 million redevelopment of Shoalhaven Hospital.

Our Project Team recently hit the road to share with the community the latest images of the redevelopment, as well as more information about the exciting new and expanded services which will be delivered (see details on page 2).

We would like to thank the hundreds of residents who stopped at our pop-up information stands at Berry, Nowra, Ulladulla and Vincentia to ask questions and offer feedback on the project.

Our information “road show” will be back on tour in coming months but we welcome your questions or feedback at any time – see page 3 for details.

The image above is an artist’s impression of the new seven-storey acute services building (this view from Shoalhaven Street) which will be directly connected to the existing hospital, at the right of the picture. You’ll find more information and pictures inside this update.

New and expanded services at Shoalhaven Hospital:

- A new emergency department (ED) and emergency short-stay unit to improve patient flow and reduce wait times
- New state-of-the-art intensive care unit (ICU)
- Theatres and endoscopy procedure rooms which will double in number
- A dedicated cardiology inpatient unit (IPU), coronary care unit and catheterisation lab
- A new vascular surgery service and expanded orthopaedic, general surgery and urology services
- Overnight surgical IPUs and a dedicated day surgery unit
- New medical IPUs for specialties including gastroenterology, respiratory, oncology, endocrinology and general medicine
- A new acute mental health IPU
- A psychiatric emergency care centre for emergency and crisis response adjacent to the emergency department
- An expanded acute stroke unit collocated with a dedicated rehabilitation service to ensure early access to rehabilitation and minimise functional loss
- A new nuclear medicine department to support expanded clinical services including cancer, cardiology and respiratory care
- A new MRI service to provide improved diagnostic capacity
- Expanded medical imaging including CT, X-ray, ultrasound and mammography to support clinical services
- Significant increase in aged care capacity in a dedicated acute aged care ward
- A sub-acute geriatric evaluation and management service
- A dedicated palliative care facility
- A new paediatric assessment unit which will provide additional capacity for day presentations and short stay admissions
- A specialist rehabilitation unit for a range of conditions including stroke, orthopaedics, brain and spine injuries
- Expanded outpatient departments for follow up and management of admitted and non-admitted services
- Helipad on top of the new building with direct access to ICU and ED.

If you're after more information please visit our dedicated website:

shoalhavenredevelopment.health.nsw.gov.au

You can email your questions, comments or feedback to [ISLHD-](mailto:ISLHD-Projectcomms@health.nsw.gov.au)

Projectcomms@health.nsw.gov.au

The following may also answer some of your questions:

Q. What is the timeline for the redevelopment?

In 2022 the team will continue to work on and refine the design of the new building and refurbishment.

The relocation and building of the preschool will commence in 2022. Planning approval for the main project will be sought in mid-2022. Following planning approval, construction will commence in 2023 with the intention for the new hospital to be completed in 2026. Throughout the entire process, there will be continued opportunities for community and stakeholder consultation.

Q. What kind of environmental and sustainable practices will be included in the redevelopment?

The new hospital will be a sustainable and environmentally friendly facility with more efficient building systems and renewable energy strategies.

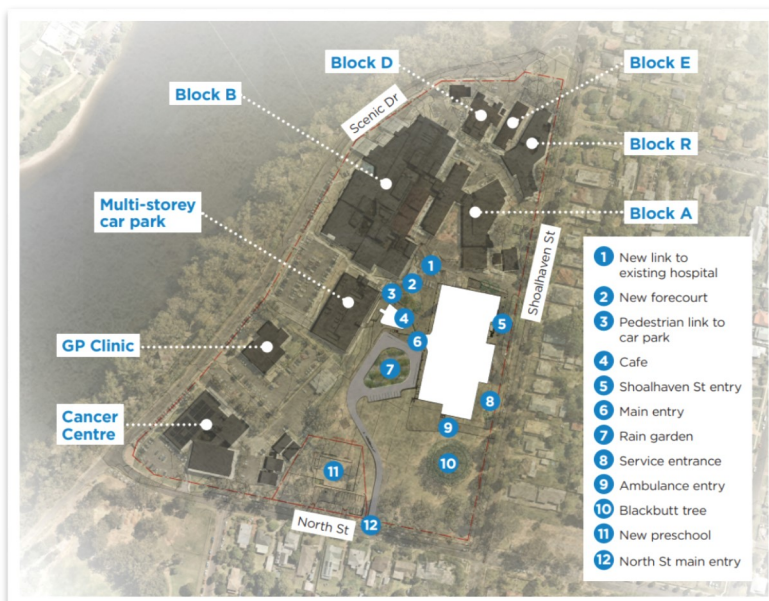
A broad range of initiatives to reduce greenhouse gas emissions will be introduced. The design will reduce energy consumption and will include plenty of natural light, access to outdoor courtyards and spaces to relax and socialise.

Examples of the project's sustainability initiatives include:

- Prioritising northern orientation to optimise solar control in summer and winter
- Providing solar panels on available roof space
- Minimising the need for use of fossil fuels in powering the hospital by using electrical heating instead of gas heating.

Q. Will you be removing the blackbutt tree?

No, the tree will remain in place and will be a focal point of our landscaping designs.



Q. What is happening with the Shoalhaven Community Preschool?

To accommodate the new hospital building the preschool will be relocated to the southern end of the Hospital campus. This follows extensive consultation with the preschool operators and Shoalhaven City Council.

The new building will include a dedicated parking zone for carers and staff, including a drop-off zone.

In addition to the new preschool, the southern end of the campus will also be retained as greenspace – enhancing the area's family-friendly atmosphere.

Construction is scheduled to commence this year and the current preschool will remain open until the new building is completed.



These artist's impressions show different angles of the hospital redevelopment. The top image represents the main entry and public access to the emergency department from North Street. A café for staff, patients and visitors will face the main entrance. The area will be landscaped with native plants and water features, complemented by outdoor seating areas.



The bottom picture shows the new preschool to the left of the main entrance on North Street and landscaping which will flow down the green open spaces to a playground area open to the community as well as hospital visitors.



Looking for hospital history

Do you have any pictures or stories about our hospital's history?

We're working on plans to ensure we capture the past in our new redevelopment, not only the significant dates but also the people who have contributed to the hospital over the past century.

The seeds for a public hospital in Nowra were first planted in 1919, as a memorial to the District's men who died in World War I. The plan lay dormant for years, until the community rallied again in the 1940s and the hospital was built and opened in 1951.

If you have any pictures of the hospital and its people we'd love to hear from you. We'd also love to hear your stories. You may have a family connection to the hospital that stretches back in time, or a significant memory that you'd like to share.

Contact Communications Officer Jen White at: ISLHD-Projectcomms@health.nsw.gov.au

