

# Shoalhaven Hospital

Design concepts January 2022





# Walk on Country

02/12/2021



"Country is Our Mother, Our Teacher, Our Library, Our Kin, it sustains, inspires and surrounds us. The experience of Country is both individual and collective, both new and familiar. From her we learn, share and flourish, contributing to care for Country

is central to our being, our identity. Country is a responsibility, not a right and is there for all who respect and cherish her. Today we may not always be able to see Country instantly, but if we call to it, we can always sense her and again feel her embrace"

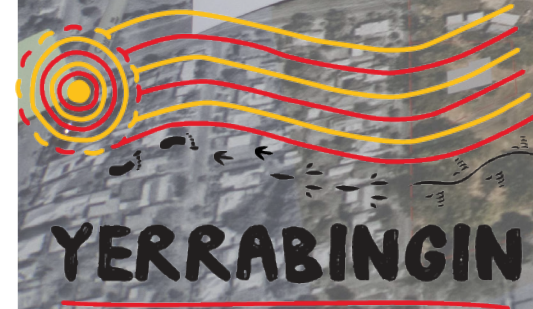
- Christian Hampson





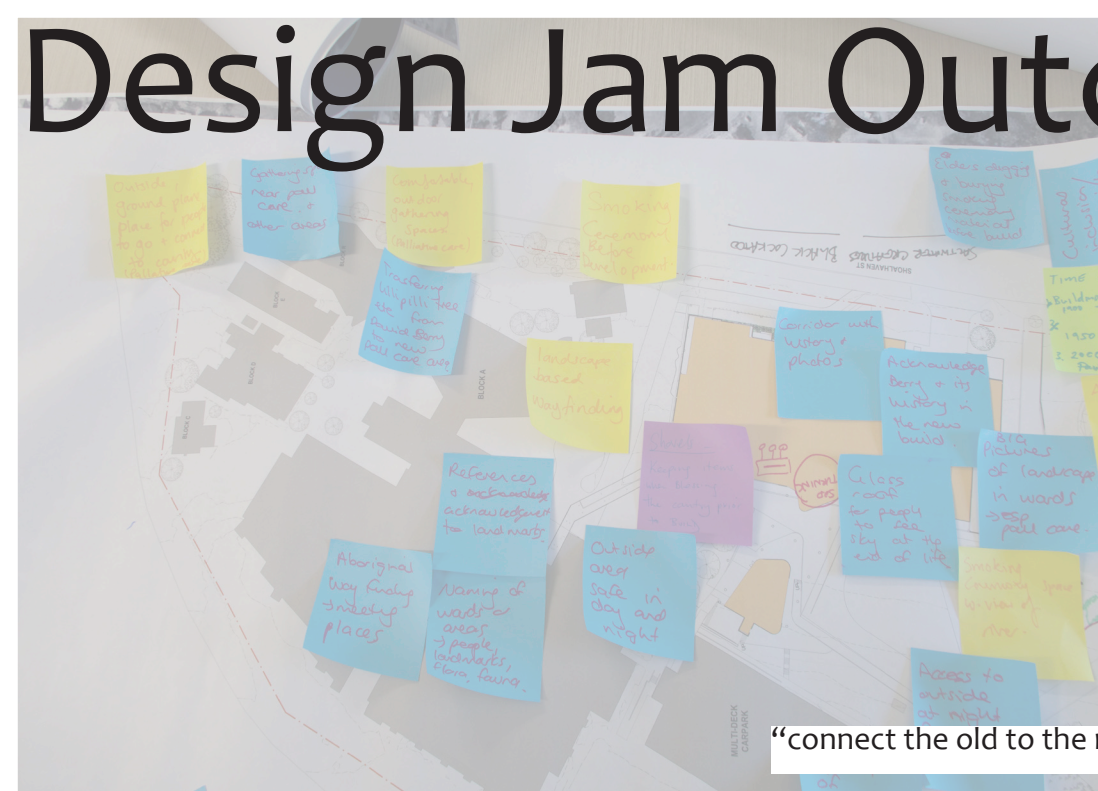
# Design Jam

02/12/2021





# Design Jam Outcomes





# Key Ideas Welcome

Design Jam participants want the Shoalhaven Hospital to be a place that acknowledges, respects and welcomes Aboriginal cultural identities. Everyone should feel confident to be who they are when accessing healthcare services, and confident that healthcare facilities will cater to their cultural needs. In taking steps to make this happen, Aboriginal patients and families will have safer and more enjoyable experiences at the Shoalhaven Hospital, at what can often be a stressful time.



An easy way to express welcome and provide acknowledgement to distinct Indigenous cultures is by flying the Aboriginal and Torres Strait Islander flags, proudly at the front of the hospital. This could be accompanied by a plaque acknowledging Country.

In the foyer we recommend creating a mural. Design Jam participants referenced one from the Berry Hospital. A mural inspired by the one at Berry Hospital could be a nod to the past and a celebration of the present and future opportunities that have come about as a result of it.



At the front of the hospital, there will also be a rain garden. This will be filled with species endemic to the area and create a sense of arrival for the hospital. This is an excellent visual which depicts the holistic connections and processes of Country. It is also a place for play and curiosity upon arriving, an inviting space in a traditionally sterile environment.



Aboriginal patients and families will feel welcome when greeted by an Aboriginal Liaison Officer. Increased numbers of Aboriginal staff are crucial and it could be useful to have dedicated wayfinding symbols to indicate where to access specialised cultural services.





# Key Ideas

# Journey of life

Hospitals are places where significant life events occur. Birthing and palliative care typically have ceremony that accompany them. Creating space that allows for baby naming ceremonies or sorry business is important.

Mount Cullunghutti encapsulates these life stages. Women were known to give birth there, and it is also the point where those who have passed on, go to meet the ancestors.

Rooms with expansive views out to this mountain ensures a connection to Country at the beginning and end of life - providing comfort and reassurance.

A meditation or relaxation space in the palliative care unit that plays sound recordings from Cullunghutti. Indoor gardens that contain species that can be found at Cullunghutti Reserve.



Semi-private outdoor rooms



End of life views out to Cullunghutti Mountain

Having family nearby during this time for support. Spaces should cater to Aboriginal concepts of kin - large groups of extended family, young and old.

A playground for children to run around and play during long waiting times, inspired by Country. Tea and coffee making facilities close to lots of natural seating options for our old people.



Cullunghutti playscape



A women's bush garden near the birthing suites containing women's medicine and weaving plants. Allowing them the option of traditional medicine and a calming, cultural activity during their stay.



sandpaper fig



dianella revoluta



broad-leaved Geebung



Mentha saturoides



Eucalyptus piperita



Eucalyptus tereticornis



Cullunghutti Mountain interior glass etching





## Key Ideas

# Working together for a better future

The rainbow serpent story reminds us of how we should always try our best, work together and that community will always be there to catch you if you fall.

This story is a great metaphor for how the local Aboriginal community and NSW Health have an opportunity to work together to create a healthier and happier hospital experience for generations to come



The body of the rainbow serpent can be used as a wayfinding symbol. His body running along the walls to the Koori Centre.



Opportunity for facade design

Opportunity for sculptural element at the entrance of the hospital representing the rainbow lorikeet dreamtime story. A written plaque will then read the story to educate people on local stories. The shadow would move throughout the day to seem like the sculpture was flying



“ Two brothers used to bother every one round the camp  
Big rain come and everyone had already built their gunyas  
The two brothers had not built their houses – asked to sleep in other houses – everyone said no  
Rainbow serpent called them over  
Said they could sleep in his mouth for shelter  
Two boys went in  
Everyone woke up the next day and could not find the two boys  
Old man said they went into rainbow serpent  
Followed his tracks to find him  
Found him sleeping at the top of the mountain – snoring knocking the rocks down  
Went to goanna for help to climb  
Goanna climbed up mountain  
Could hear the boys crying for help from inside the rainbow serpent  
Goanna cut the belly  
Two rainbow lorikeets come out  
Always try your hardest and always work together  
Lorikeets still travel in pairs

“



# Key Ideas

# Grounded on Country

## Blackbutt trees

Fauna Value: Nectar and pollen highly sort after by fauna when the tree is in flower, however this does not occur regularly. Older trees from magnificent fauna refuges with many hollow logs. Smooth sections of trunk are often scarred by scribbly gum moth larvae. Seed is readily sought after by the local endangered population of Gang-gang Cockatoos.



Opportunity to propagate existing blackbutt tree for landscape

## Meeting around the Blackbutt...

The tree is a safe place to come back to, for reflection, mindfulness, a reminder of being on Country and a symbol of refuge and resilience



Country as being a habitat for animals and a refuge for humans. Country is grounding, safe and welcomaing.



Paths and seating nodes within landscape for people to move through freely and sit and enjoy the landscape. Bush tucker and medicinal species to be planted for foraging and as a piece of education for people walking through the space



Bringing the outside in



Yamazaki kentaro's nature-infused hospice in Japan





# Key Ideas

## Grounded on Country

Shoalhaven river is extremely significant within the Shoalhaven region and can be explored and represented in many ways.

Internally, providing views out to the river is important for patients to connect to Country. Providing large windows to allow those views and let in natural light will improved the health and wellbeing of patients



Art as a way of wayfinding throughout the hospital and educating people about the tribes which were along the rivers edge and used it as a food source.

Within the landscape, organic pathways can represent the shape of the river and potential change in pavement colour and pattern could also enhance this.



The Blackbutt meeting place also being the meeting between salt and fresh water. Two pathways connecting at this junction. The saltwater path coming from the East and the freshwater path heading towards the West.

Pavement patterns or engravings could then explore the different species found in the salt and fresh water.





# SHOALHAVEN RIVER & CULLUNGHUTTI MOUNTAIN

Upper floors of the hospital having large windows for viewing of the river to the West but also views to **Cullunghutti Mountain** to the North East ensures a connection to Country at the beginning and end of life - providing comfort and reassurance.

Salt and freshwater connection and significance represented through landscape design. Opportunity for pathways or pavement patternation to tell the rivers story and a meeting place to represent where the salt and fresh water meet.



## RAINBOW LORIKEET DREAMTIME STORY



Opportunity for sculptural element at the entrance of the hospital representing the rainbow lorikeet dreamtime story. A written plaque will then read the story to educate people on local stories. The shadow would move throughout the day to seem like the sculpture was flying

+ Potential location

## RAIN GARDEN

Raingarden at entry to create a sense of arrival for the hospital. A beautiful display of plants that accommodates large water quantities during rainfall.



### Plant species:

- 1 Centipeda cunninghamii
- 2 Blechnum indicum
- 3 Juncus kraussii subsp. australiensis
- 4 Juncus planifolius
- 5 Juncus usitatus
- 6 Lomandra longifolia
- 7 Isolepis inundata

- Old Mans Weed
- Swamp Water Fern
- Salt marsh rush
- Broadleaf rush
- Common rush
- Spiny-head mat-rush
- Swamp club-rush



## ABORIGINAL AND TORRES STRAIT ISLANDER FLAGS

Flying at entry to hospital



Mount Cullunghutti encapsulates these life stages. Women would give birth there, and it is also the point where those who have passed on, go to meet the ancestors.

Internally, Cullunghutti could also inspired window / wall art and external play spaces.

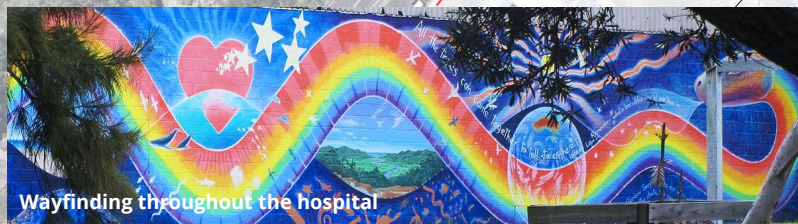
## WOMEN'S GARDEN

A women's bush garden near the birthing suites containing women's medicine and weaving plants. Allowing them the option of traditional medicine and a calming, cultural activity during their stay.



The rainbow serpent story reminds us of how we should always try our best, work together and that community will always be there to catch you if you fall.

This story is a great metaphor for how the local Aboriginal community and NSW Health have an opportunity to work together to create a healthier and happier hospital experience for generations to come



Path continuing throughout the hospital for wayfinding and representing connection to the Shoalhaven river

## THE BUILDING

Acknowledgement at entry of hospital; feeling welcome

Photographs or art pieces of local landmarks and significant sites (e.g. Cullunghutti Mountain)

Family rooms on every floor with big windows connecting to Country

No clinical or sterile colours, must be naturally colourful



Accessible veranda facing the river



Bring the outside in



Birthing / maternity unit facing Cullunghutti Mountain

## THE LANDSCAPE

Propagation of blackbutt tree to plant around site  
Bush Tucker / medicinal garden for foraging



Large gathering space / amphitheatre around Blackbutt tree

